
Product Datasheet

ABL1 ABL2 Antibody (orb1253695)

Description

ABL1 ABL2 Antibody

Species/Host

Rabbit

Reactivity

Human, Mouse

Conjugation

Unconjugated

Tested Applications

IF, IHC, WB

Immunogen

ABL1/2 (phospho-Tyr393/429) antibody was raised against a peptide sequence around phosphorylation site of tyrosine 393/429 (D-T-Y (p) -T-A) derived from Human ABL1/2.

Target

ABL1 ABL2

Preservatives

Antibody supplied in phosphate buffered saline (without Mg²⁺ and Ca²⁺), pH 7.4, 150mM NaCl, 0.02% sodium azide and 50% glycerol.

Form/Appearance

Liquid

Concentration

1 mg/mL

Storage

Store antibody at -20°C for up to one year.

Note

For research use only

Application notes

Western Blot: 1:500~1:1000,
Immunohistochemistry: 1:50~1:100,
Immunofluorescence: 1:100~1:200

Clonality

Polyclonal

MW

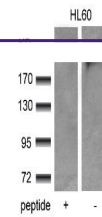
210 kDa

Uniprot ID
[P42684](#), [P00519](#)
NCBI
[NP_005148.2](#), [NP_001129472.1](#)
Dilution Range

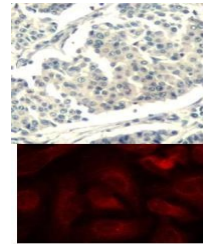
Western Blot: 1:500~1:1000,
Immunohistochemistry: 1:50~1:100,
Immunofluorescence: 1:100~1:200

Expiration Date

12 months from date of receipt.



Western blot analysis of lysed extracts ...



Top Image: Immunohistochemical analysis ...