
Product Datasheet

CFL1 CFL2 Antibody (orb1253521)

Description

CFL1 CFL2 Antibody

Species/Host

Rabbit

Reactivity

Human, Mouse

Conjugation

Unconjugated

Tested

IF, IHC, WB

Applications
Immunogen

cofilin1/cofilin2 (Ab-88) antibody was raised against a peptide sequence around aa. 86~90 (A-T-Y-E-T) derived from Human cofilin1/cofilin2.

Target

CFL1 CFL2

Preservatives

 Antibody supplied in phosphate buffered saline (without Mg²⁺ and Ca²⁺), pH 7.4, 150mM NaCl, 0.02% sodium azide and 50% glycerol.

Form/Appearance

Liquid

Concentration

1 mg/mL

Storage

Store antibody at -20°C for up to one year.

Note

For research use only

Application notes

 Western Blot: 1:500~1:1000,
 Immunohistochemistry: 1:50~1:100,
 Immunofluorescence: 1:100~1:200

Clonality

Polyclonal

MW

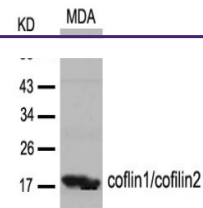
19 kDa

Uniprot ID
[Q9Y281](#), [P23528](#)
NCBI
[NP_005498.1](#), [NP_068733.1](#)
Dilution Range

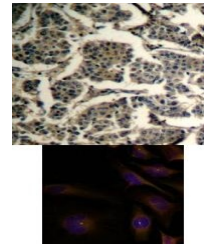
 Western Blot: 1:500~1:1000,
 Immunohistochemistry: 1:50~1:100,
 Immunofluorescence: 1:100~1:200

Expiration Date

12 months from date of receipt.



Western blot analysis of lysed extracts ...



Top Image: Immunohistochemical analysis ...