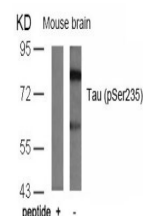


Product Datasheet

MAPT Antibody (orb1253487)

Description	MAPT Antibody
Species/Host	Rabbit
Reactivity	Human, Mouse, Rat
Conjugation	Unconjugated
Tested Applications	WB
Immunogen	Tau (Phospho-Ser235) antibody was raised against a peptide sequence around phosphorylation site of serine 235 (P-K-S (p) -P-S) derived from Human Tau.
Target	MAPT
Preservatives	Antibody supplied in phosphate buffered saline (without Mg ²⁺ and Ca ²⁺), pH 7.4, 150mM NaCl, 0.02% sodium azide and 50% glycerol.
Form/Appearance	Liquid
Concentration	1 mg/mL
Storage	Store antibody at -20°C for up to one year.
Note	For research use only
Application notes	Western Blot: 1:500~1:1000
Clonality	Polyclonal
MW	48, 62, 78 kDa
Uniprot ID	P10636
NCBI	NP_001116538.1
Dilution Range	Western Blot: 1:500~1:1000
Expiration Date	12 months from date of receipt.



Western blot analysis of lysed extracts ...