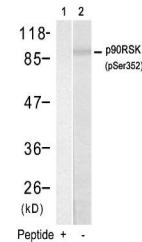


Product Datasheet

RPS6KA1 Antibody (orb1253485)

Description	RPS6KA1 Antibody
Species/Host	Rabbit
Reactivity	Human
Conjugation	Unconjugated
Tested Applications	WB
Immunogen	p90RSK (Phospho-Ser352) antibody was raised against a peptide sequence around phosphorylation site of serine 352 (R-D-S (p) -P-G) derived from Human p90RSK.
Target	RPS6KA1
Preservatives	Antibody supplied in phosphate buffered saline (without Mg ²⁺ and Ca ²⁺), pH 7.4, 150mM NaCl, 0.02% sodium azide and 50% glycerol.
Form/Appearance	Liquid
Concentration	1 mg/mL
Storage	Store antibody at -20°C for up to one year.
Note	For research use only
Application notes	Western Blot: 1:500~1:1000
Clonality	Polyclonal
MW	90 kDa
Uniprot ID	Q15418
NCBI	NP_001006666.1
Dilution Range	Western Blot: 1:500~1:1000
Expiration Date	12 months from date of receipt.



Western blot analysis of lysed extracts ...