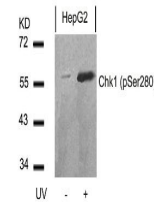


Product Datasheet

CHEK1 Antibody (orb1253484)

| | |
|----------------------------|---|
| Description | CHEK1 Antibody |
| Species/Host | Rabbit |
| Reactivity | Human |
| Conjugation | Unconjugated |
| Tested Applications | WB |
| Immunogen | Chk1 (Phospho-Ser280) antibody was raised against a peptide sequence around phosphorylation site of serine 280 (V-T-S (p) -G-G) derived from Human Chk1. |
| Target | CHEK1 |
| Preservatives | Antibody supplied in phosphate buffered saline (without Mg ²⁺ and Ca ²⁺), pH 7.4, 150mM NaCl, 0.02% sodium azide and 50% glycerol. |
| Form/Appearance | Liquid |
| Concentration | 1 mg/mL |
| Storage | Store antibody at -20°C for up to one year. |
| Note | For research use only |
| Application notes | Western Blot: 1:500~1:1000 |
| Clonality | Polyclonal |
| MW | 56 kDa |
| Uniprot ID | O14757 |
| NCBI | NP_001107593.1 |
| Dilution Range | Western Blot: 1:500~1:1000 |
| Expiration Date | 12 months from date of receipt. |



Western blot analysis of lysed extracts ...