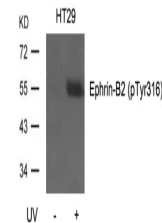


Product Datasheet

EFNB2 Antibody (orb1253475)

Description	EFNB2 Antibody
Species/Host	Rabbit
Reactivity	Human, Mouse
Conjugation	Unconjugated
Tested Applications	WB
Immunogen	Ephrin-B2 (Phospho-Tyr316) antibody was raised against a peptide sequence around phosphorylation site of tyrosine 316 (P-V-Y (p) -I-V) derived from Human Ephrin-B2.
Target	EFNB2
Preservatives	Antibody supplied in phosphate buffered saline (without Mg ²⁺ and Ca ²⁺), pH 7.4, 150mM NaCl, 0.02% sodium azide and 50% glycerol.
Form/Appearance	Liquid
Concentration	1 mg/mL
Storage	Store antibody at -20°C for up to one year.
Note	For research use only
Application notes	Western Blot: 1:500~1:1000
Clonality	Polyclonal
MW	37 kDa
Uniprot ID	P52799
NCBI	NP_004084.1
Dilution Range	Western Blot: 1:500~1:1000
Expiration Date	12 months from date of receipt.



Western blot analysis of lysed extracts ...