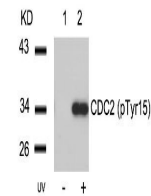


Product Datasheet

CDK1 Antibody (orb1253458)

Description	CDK1 Antibody
Species/Host	Rabbit
Reactivity	Human, Mouse, Rat
Conjugation	Unconjugated
Tested Applications	WB
Immunogen	CDC2 (Phospho-Tyr15) antibody was raised against a peptide sequence around phosphorylation site of tyrosine 15 (G-T-Y (p) -G-V) derived from Human CDC2.
Target	CDK1
Preservatives	Antibody supplied in phosphate buffered saline (without Mg ²⁺ and Ca ²⁺), pH 7.4, 150mM NaCl, 0.02% sodium azide and 50% glycerol.
Form/Appearance	Liquid
Concentration	1 mg/mL
Storage	Store antibody at -20°C for up to one year.
Note	For research use only
Application notes	Western Blot: 1:500~1:1000
Clonality	Polyclonal
MW	34 kDa
Uniprot ID	P06493
NCBI	NP_001163877.1
Dilution Range	Western Blot: 1:500~1:1000
Expiration Date	12 months from date of receipt.



Western blot analysis of lysed extracts ...