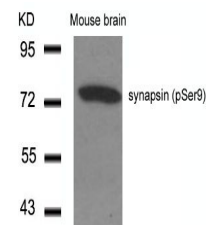


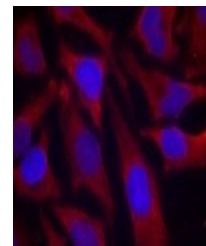
Product Datasheet

SYN1 Antibody (orb1253453)

Description	SYN1 Antibody
Species/Host	Rabbit
Reactivity	Human, Mouse, Rat
Conjugation	Unconjugated
Tested Applications	IF, WB
Immunogen	synapsin (Phospho-Ser9) antibody was raised against a peptide sequence around phosphorylation site of serine 9 (R-L-S (p) -D-S) derived from Human SYN1/synapsin.
Target	SYN1
Preservatives	Antibody supplied in phosphate buffered saline (without Mg ²⁺ and Ca ²⁺), pH 7.4, 150mM NaCl, 0.02% sodium azide and 50% glycerol.
Form/Appearance	Liquid
Concentration	1 mg/mL
Storage	Store antibody at -20°C for up to one year.
Note	For research use only
Application notes	Western Blot: 1:500~1:1000, Immunofluorescence: 1:100~1:200
Clonality	Polyclonal
MW	77 kDa
Uniprot ID	P17600
NCBI	NP_008881.2
Dilution Range	Western Blot: 1:500~1:1000, Immunofluorescence: 1:100~1:200
Expiration Date	12 months from date of receipt.



Western blot analysis of lysed extracts ...



Immunofluorescence staining of methanol-...