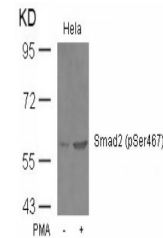


Product Datasheet

SMAD2 Antibody (orb1253441)

Description	SMAD2 Antibody
Species/Host	Rabbit
Reactivity	Human, Mouse, Rat
Conjugation	Unconjugated
Tested Applications	WB
Immunogen	Smad2 (Phospho-Ser467) antibody was raised against a peptide sequence around phosphorylation site of serine 467 (C-S-S-M-S (p)) derived from Human Smad2.
Target	SMAD2
Preservatives	Antibody supplied in phosphate buffered saline (without Mg ²⁺ and Ca ²⁺), pH 7.4, 150mM NaCl, 0.02% sodium azide and 50% glycerol.
Form/Appearance	Liquid
Concentration	1 mg/mL
Storage	Store antibody at -20°C for up to one year.
Note	For research use only
Application notes	Western Blot: 1:500~1:1000
Clonality	Polyclonal
MW	60 kDa
Uniprot ID	Q15796
NCBI	NP_001003652.1
Dilution Range	Western Blot: 1:500~1:1000
Expiration Date	12 months from date of receipt.



Western blot analysis of lysed extracts ...