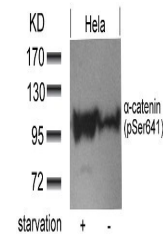


Product Datasheet

CTNNA1 Antibody (orb1253437)

Description	CTNNA1 Antibody
Species/Host	Rabbit
Reactivity	Human, Mouse
Conjugation	Unconjugated
Tested Applications	WB
Immunogen	a-catenin (Phospho-Ser641) antibody was raised against a peptide sequence around phosphorylation site of serine 641 (D-D-S (p) -D-F) derived from Human α -catenin.
Target	CTNNA1
Preservatives	Antibody supplied in phosphate buffered saline (without Mg ²⁺ and Ca ²⁺), pH 7.4, 150mM NaCl, 0.02% sodium azide and 50% glycerol.
Form/Appearance	Liquid
Concentration	1 mg/mL
Storage	Store antibody at -20°C for up to one year.
Note	For research use only
Application notes	Western Blot: 1:500~1:1000
Clonality	Polyclonal
MW	100 kDa
Uniprot ID	P35221
NCBI	NP_001894.2
Dilution Range	Western Blot: 1:500~1:1000
Expiration Date	12 months from date of receipt.



Western blot analysis of lysed extracts ...