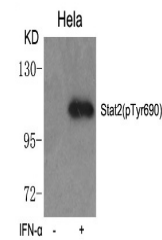


Product Datasheet

STAT2 Antibody (orb1253432)

Description	STAT2 Antibody
Species/Host	Rabbit
Reactivity	Human
Conjugation	Unconjugated
Tested Applications	WB
Immunogen	Stat2 (phospho-Tyr690) antibody was raised against a peptide sequence around phosphorylation site of tyrosine 690 (R-K-Y (p) -L-K) derived from Human Stat2.
Target	STAT2
Preservatives	Antibody supplied in phosphate buffered saline (without Mg ²⁺ and Ca ²⁺), pH 7.4, 150mM NaCl, 0.02% sodium azide and 50% glycerol.
Form/Appearance	Liquid
Concentration	1 mg/mL
Storage	Store antibody at -20°C for up to one year.
Note	For research use only
Application notes	Western Blot: 1:1000
Clonality	Polyclonal
MW	113 kDa
Uniprot ID	P52630
NCBI	NP_005410.1
Dilution Range	Western Blot: 1:1000
Expiration Date	12 months from date of receipt.



Western blot analysis of lysed extracts ...