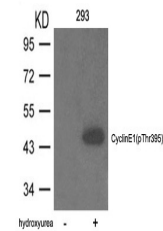


Product Datasheet

CCNE1 Antibody (orb1253430)

Description	CCNE1 Antibody
Species/Host	Rabbit
Reactivity	Human
Conjugation	Unconjugated
Tested Applications	WB
Immunogen	Cyclin E1 (phospho-Thr395) antibody was raised against a peptide sequence around phosphorylation site of threonine 395 (L-L-T (p) -P-P) derived from Human Cyclin E1.
Target	CCNE1
Preservatives	Antibody supplied in phosphate buffered saline (without Mg ²⁺ and Ca ²⁺), pH 7.4, 150mM NaCl, 0.02% sodium azide and 50% glycerol.
Form/Appearance	Liquid
Concentration	1 mg/mL
Storage	Store antibody at -20°C for up to one year.
Note	For research use only
Application notes	Western Blot: 1:1000
Clonality	Polyclonal
MW	48 kDa
Uniprot ID	P24864
NCBI	NP_001229.1
Dilution Range	Western Blot: 1:1000
Expiration Date	12 months from date of receipt.



Western blot analysis of lysed extracts ...