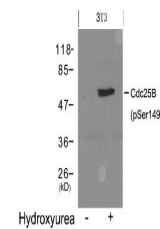


Product Datasheet

Cdc25b Antibody (orb1253426)

Description	Cdc25b Antibody
Species/Host	Rabbit
Reactivity	Mouse, Rat
Conjugation	Unconjugated
Tested Applications	WB
Immunogen	Cdc25B (Phospho-Ser149) antibody was raised against a peptide sequence around phosphorylation site of Serine 149 (F-R-S (p) -L-P) derived from Mouse Cdc25B.
Target	Cdc25b
Preservatives	Antibody supplied in phosphate buffered saline (without Mg ²⁺ and Ca ²⁺), pH 7.4, 150mM NaCl, 0.02% sodium azide and 50% glycerol.
Form/Appearance	Liquid
Concentration	1 mg/mL
Storage	Store antibody at -20°C for up to one year.
Note	For research use only
Application notes	Western Blot: 1:500~1:1000
Clonality	Polyclonal
MW	62 kDa
Uniprot ID	Q9DBN8
NCBI	NP_001104545.1
Dilution Range	Western Blot: 1:500~1:1000
Expiration Date	12 months from date of receipt.



Western blot analysis of lysed extracts ...