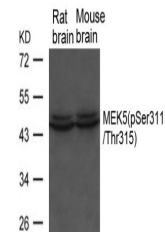


Product Datasheet

Map2k5 Antibody (orb1253424)

Description	Map2k5 Antibody
Species/Host	Rabbit
Reactivity	Human, Mouse, Rat
Conjugation	Unconjugated
Tested Applications	WB
Immunogen	MEK5 (phospho-Ser311/ Thr315) antibody was raised against a peptide sequence around phosphorylation site of Serine 311 and threonine 315 (V-N-S (p) I-A-K-T (p) -Y-V) derived from Rat MEK5.
Target	Map2k5
Preservatives	Antibody supplied in phosphate buffered saline (without Mg ²⁺ and Ca ²⁺), pH 7.4, 150mM NaCl, 0.02% sodium azide and 50% glycerol.
Form/Appearance	Liquid
Concentration	1 mg/mL
Storage	Store antibody at -20°C for up to one year.
Note	For research use only
Application notes	Western Blot: 1:500~1:1000
Clonality	Polyclonal
MW	46 kDa
Uniprot ID	Q62862
NCBI	NP_001029159.1
Dilution Range	Western Blot: 1:500~1:1000
Expiration Date	12 months from date of receipt.



Western blot analysis of lysed extracts ...