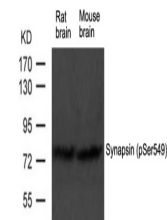


Product Datasheet

Syn1 Antibody (orb1253423)

Description	Syn1 Antibody
Species/Host	Rabbit
Reactivity	Human, Mouse, Rat
Conjugation	Unconjugated
Tested Applications	WB
Immunogen	Synapsin (phospho-Ser549) antibody was raised against a peptide sequence around phosphorylation site of serine 549 (P-A-S (p) -P-S) derived from Rat Synapsin.
Target	Syn1
Preservatives	Antibody supplied in phosphate buffered saline (without Mg ²⁺ and Ca ²⁺), pH 7.4, 150mM NaCl, 0.02% sodium azide and 50% glycerol.
Form/Appearance	Liquid
Concentration	1 mg/mL
Storage	Store antibody at -20°C for up to one year.
Note	For research use only
Application notes	Western Blot: 1:500~1:1000
Clonality	Polyclonal
MW	78 kDa
Uniprot ID	O88935
NCBI	NP_038708.3
Dilution Range	Western Blot: 1:500~1:1000
Expiration Date	12 months from date of receipt.



Western blot analysis of extract from ra...