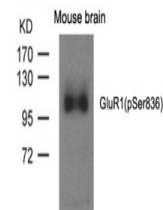


Product Datasheet

GRIA1 Antibody (orb1253419)

Description	GRIA1 Antibody
Species/Host	Rabbit
Reactivity	Human, Mouse, Rat
Conjugation	Unconjugated
Tested Applications	WB
Immunogen	GluR1 (phospho-Ser836) antibody was raised against a peptide sequence around phosphorylation site of serine 836 (S-E-Sp-K-R) derived from Human GluR1.
Target	GRIA1
Preservatives	Antibody supplied in phosphate buffered saline (without Mg ²⁺ and Ca ²⁺), pH 7.4, 150mM NaCl, 0.02% sodium azide and 50% glycerol.
Form/Appearance	Liquid
Concentration	1 mg/mL
Storage	Store antibody at -20°C for up to one year.
Note	For research use only
Application notes	Western Blot: 1:500~1:1000
Clonality	Polyclonal
MW	110 kDa
Uniprot ID	P42261
NCBI	NP_000818.2
Dilution Range	Western Blot: 1:500~1:1000
Expiration Date	12 months from date of receipt.



Western blot analysis of lysed extracts ...