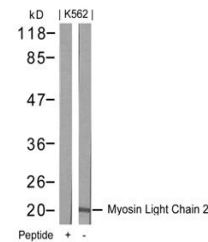


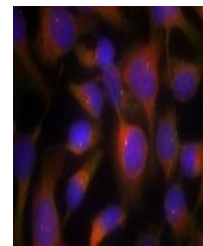
## Product Datasheet

### MYL12A Antibody (orb1253380)

<b>Description</b>	MYL12A Antibody
<b>Species/Host</b>	Rabbit
<b>Reactivity</b>	Human, Mouse, Rat
<b>Conjugation</b>	Unconjugated
<b>Tested Applications</b>	IF, WB
<b>Immunogen</b>	Myosin Light Chain 2 (Ab-18) antibody was raised against a peptide sequence around aa.16~20 (A-T-S-N-V) derived from Human Myosin Light Chain 2.
<b>Target</b>	MYL12A
<b>Preservatives</b>	Antibody supplied in phosphate buffered saline (without Mg <sup>2+</sup> and Ca <sup>2+</sup> ), pH 7.4, 150mM NaCl, 0.02% sodium azide and 50% glycerol.
<b>Form/Appearance</b>	Liquid
<b>Concentration</b>	1 mg/mL
<b>Storage</b>	Store antibody at -20°C for up to one year.
<b>Note</b>	For research use only
<b>Application notes</b>	Western Blot: 1:500~1:1000, Immunofluorescence: 1:100~1:200
<b>Clonality</b>	Polyclonal
<b>MW</b>	18 kDa
<b>Uniprot ID</b>	<a href="#">P19105</a>
<b>NCBI</b>	<a href="#">NP_006462.1</a>
<b>Dilution Range</b>	Western Blot: 1:500~1:1000, Immunofluorescence: 1:100~1:200
<b>Expiration Date</b>	12 months from date of receipt.



Western blot analysis of lysed extracts ...



Immunofluorescence staining of methanol-...