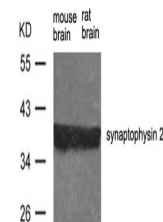


Product Datasheet

Synpr Antibody (orb1253279)

Description	Synpr Antibody
Species/Host	Rabbit
Reactivity	Rat
Conjugation	Unconjugated
Tested Applications	WB
Immunogen	synaptophysin 2 antibody was raised against a peptide sequence around aa.257~261 (G-P-T-S-F) derived from Rat synaptophysin 2.
Target	Synpr
Preservatives	Antibody supplied in phosphate buffered saline (without Mg ²⁺ and Ca ²⁺), pH 7.4, 150mM NaCl, 0.02% sodium azide and 50% glycerol.
Form/Appearance	Liquid
Concentration	1 mg/mL
Storage	Store antibody at -20°C for up to one year.
Note	For research use only
Application notes	Western Blot: 1:500~1:1000
Clonality	Polyclonal
MW	37 kDa
Uniprot ID	P22831
NCBI	NP_076464.1
Dilution Range	Western Blot: 1:500~1:1000
Expiration Date	12 months from date of receipt.



Western blot analysis of extract from ra...