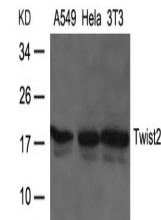


Product Datasheet

TWIST2 Antibody (orb1253174)

Description	TWIST2 Antibody
Species/Host	Rabbit
Reactivity	Human, Mouse, Rat
Conjugation	Unconjugated
Tested Applications	WB
Immunogen	Twist2 antibody was raised against a peptide sequence around aa.26~30 (P-K-R-F-G) derived from Human Twist2.
Target	TWIST2
Preservatives	Antibody supplied in phosphate buffered saline (without Mg ²⁺ and Ca ²⁺), pH 7.4, 150mM NaCl, 0.02% sodium azide and 50% glycerol.
Form/Appearance	Liquid
Concentration	1 mg/mL
Storage	Store antibody at -20°C for up to one year.
Note	For research use only
Application notes	Western Blot: 1:500~1:1000
Clonality	Polyclonal
MW	18 kDa
Uniprot ID	Q8WVJ9
NCBI	NP_476527.1
Dilution Range	Western Blot: 1:500~1:1000
Expiration Date	12 months from date of receipt.



Western blot analysis of lysed extracts ...