

---

## Product Datasheet

### CEBPA Antibody (orb1253162)

**Description**

CEBPA Antibody

**Species/Host**

Rabbit

**Reactivity**

Human, Mouse, Rat

**Conjugation**

Unconjugated

**Tested**

IHC, WB

**Applications**
**Immunogen**

C/EBP-alpha (phospho Ser21) antibody was raised against a peptide sequence around phosphorylation site of Serine 21 (L-Q-S (p)-P-P) derived from Human C/EBP-alpha.

**Target**

CEBPA

**Preservatives**

Antibody supplied in phosphate buffered saline (without Mg<sup>2+</sup> and Ca<sup>2+</sup>), pH 7.4, 150mM NaCl, 0.02% sodium azide and 50% glycerol.

**Form/Appearance**

Liquid

**Concentration**

1 mg/mL

**Storage**

Store antibody at -20°C for up to one year.

**Note**

For research use only

**Application notes**

Western Blot: 1:500~1:1000, Immunohistochemistry: 1:50~1:100

**Isotype**

IgG

**Clonality**

Polyclonal

**MW**

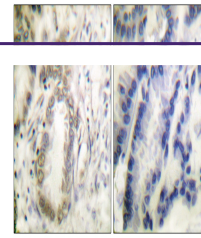
45 kDa

**Uniprot ID**
[P49715](#)
**NCBI**
[NP\\_004355.2](#)
**Dilution Range**

Western Blot: 1:500~1:1000, Immunohistochemistry: 1:50~1:100

**Expiration Date**

12 months from date of receipt.



Immunohistochemical analysis of paraffin...