
Product Datasheet

ESR1 Antibody (orb1253156)

Description

ESR1 Antibody

Species/Host

Rabbit

Reactivity

Human, Mouse

Conjugation

Unconjugated

Tested Applications

IHC, WB

Immunogen

Estrogen Receptor-alpha (phospho Tyr537) antibody was raised against a peptide sequence around phosphorylation site of tyrosine 537 (P-L-Y (p)-D-L) derived from Human Estrogen Receptor-alpha.

Target

ESR1

Preservatives

Antibody supplied in phosphate buffered saline (without Mg²⁺ and Ca²⁺), pH 7.4, 150mM NaCl, 0.02% sodium azide and 50% glycerol.

Form/Appearance

Liquid

Concentration

1 mg/mL

Storage

Store antibody at -20°C for up to one year.

Note

For research use only

Application notes

Western Blot: 1:500~1:1000, Immunohistochemistry: 1:50~1:100

Isotype

IgG

Clonality

Polyclonal

MW

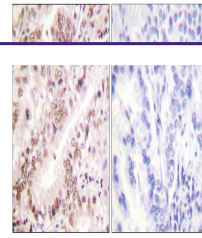
66 kDa

Uniprot ID
[P03372](#)
NCBI
[NP_000116.2](#)
Dilution Range

Western Blot: 1:500~1:1000, Immunohistochemistry: 1:50~1:100

Expiration Date

12 months from date of receipt.



Immunohistochemical analysis of paraffin...