
Product Datasheet

ETS1 Antibody (orb1253155)

Description

ETS1 Antibody

Species/Host

Rabbit

Reactivity

Human, Mouse

Conjugation

Unconjugated

Tested

IF, IHC, WB

Applications
Immunogen

ETS1 (phospho Thr38) antibody was raised against a peptide sequence around phosphorylation site of threonine 38 (L-L-T (p)-P-S) derived from Human ETS1 .

Target

ETS1

Preservatives

Antibody supplied in phosphate buffered saline (without Mg²⁺ and Ca²⁺), pH 7.4, 150mM NaCl, 0.02% sodium azide and 50% glycerol.

Form/Appearance

Liquid

Concentration

1 mg/mL

Storage

Store antibody at -20°C for up to one year.

Note

For research use only

Application notes

Western Blot: 1:500~1:1000, Immunohistochemistry: 1:50~1:100, Immunofluorescence: 1:100~1:200

Isotype

IgG

Clonality

Polyclonal

MW

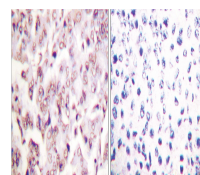
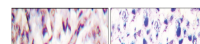
54 kDa

Uniprot ID
[P27577](#)
NCBI
[NP_035938.2](#)
Dilution Range

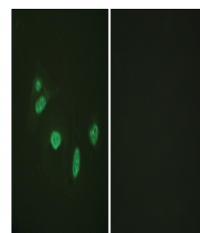
Western Blot: 1:500~1:1000, Immunohistochemistry: 1:50~1:100, Immunofluorescence: 1:100~1:200

Expiration Date

12 months from date of receipt.



Immunohistochemical analysis of paraffin...



Immunofluorescence staining of methanol-

...