

---

## Product Datasheet

### RAF1 Antibody (orb1253149)

**Description**

RAF1 Antibody


**Species/Host**

Rabbit

**Reactivity**

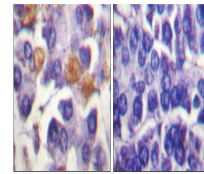
Human, Mouse, Rat

**Conjugation**

Unconjugated

**Tested**

IHC, WB

**Applications**


Immunohistochemical analysis of paraffin...

**Immunogen**

C-RAF (phospho Tyr341) antibody was raised against a peptide sequence around phosphorylation site of tyrosine 341 (S-Y-Y (p)-W-E) derived from Human C-RAF .

**Target**

RAF1

**Preservatives**

 Antibody supplied in phosphate buffered saline (without Mg<sup>2+</sup> and Ca<sup>2+</sup>), pH 7.4, 150mM NaCl, 0.02% sodium azide and 50% glycerol.

**Form/Appearance**

Liquid

**Concentration**

1 mg/mL

**Storage**

Store antibody at -20°C for up to one year.

**Note**

For research use only

**Application notes**

Western Blot: 1:500~1:1000, Immunohistochemistry: 1:50~1:100

**Isotype**

IgG

**Clonality**

Polyclonal

**MW**

74 kDa

**Uniprot ID**
[P04049](#)
**NCBI**
[NP\\_002871.1](#)
**Dilution Range**

Western Blot: 1:500~1:1000, Immunohistochemistry: 1:50~1:100

**Expiration Date**

12 months from date of receipt.