
Product Datasheet

SF1 Antibody (orb1253148)

Description

SF1 Antibody

Species/Host

Rabbit

Reactivity

Human, Mouse

Conjugation

Unconjugated

Tested Applications

IHC, WB

Immunogen

SF1 (phospho Ser82) antibody was raised against a peptide sequence around phosphorylation site of Serine 82 (S-P-S (p)-P-E) derived from Human SF1.

Target

SF1

Preservatives

 Antibody supplied in phosphate buffered saline (without Mg²⁺ and Ca²⁺), pH 7.4, 150mM NaCl, 0.02% sodium azide and 50% glycerol.

Form/Appearance

Liquid

Concentration

1 mg/mL

Storage

Store antibody at -20°C for up to one year.

Note

For research use only

Application notes

Western Blot: 1:500~1:1000, Immunohistochemistry: 1:50~1:100

Isotype

IgG

Clonality

Polyclonal

MW

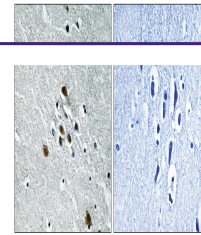
68 kDa

Uniprot ID
[Q15637](#)
NCBI
[NP_004621.2](#)
Dilution Range

Western Blot: 1:500~1:1000, Immunohistochemistry: 1:50~1:100

Expiration Date

12 months from date of receipt.



Immunohistochemical analysis of paraffin...