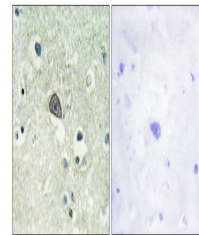


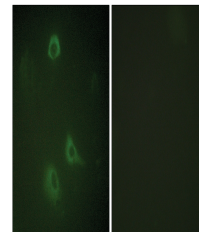
Product Datasheet

GRIN1 Antibody (orb1253144)

Description	GRIN1 Antibody
Species/Host	Rabbit
Reactivity	Human, Mouse, Rat
Conjugation	Unconjugated
Tested Applications	IF, IHC
Immunogen	NMDAR1 (phospho Ser890) antibody was raised against a peptide sequence around phosphorylation site of Serine 890 (A-S-S (p)-F-K) derived from Human NMDAR1.
Target	GRIN1
Preservatives	Antibody supplied in phosphate buffered saline (without Mg ²⁺ and Ca ²⁺), pH 7.4, 150mM NaCl, 0.02% sodium azide and 50% glycerol.
Form/Appearance	Liquid
Concentration	1 mg/mL
Storage	Store antibody at -20°C for up to one year.
Note	For research use only
Isotype	IgG
Clonality	Polyclonal
MW	120 kDa
Uniprot ID	Q05586
NCBI	NP_015566.1
Expiration Date	12 months from date of receipt.



Immunohistochemical analysis of paraffin...



Immunofluorescence staining of methanol-
...