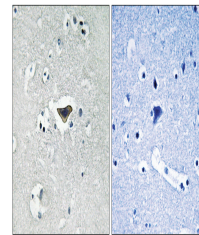


Product Datasheet

Rasgrf1 Antibody (orb1253141)

Description	Rasgrf1 Antibody
Species/Host	Rabbit
Reactivity	Mouse, Rat
Conjugation	Unconjugated
Tested Applications	IHC
Immunogen	Ras-GRF1 (phospho Ser916) antibody was raised against a peptide sequence around phosphorylation site of Serine 916 (N-E-G (p)-T P) derived from Human Ras-GRF1.
Target	Rasgrf1
Preservatives	Antibody supplied in phosphate buffered saline (without Mg ²⁺ and Ca ²⁺), pH 7.4, 150mM NaCl, 0.02% sodium azide and 50% glycerol.
Form/Appearance	Liquid
Concentration	1 mg/mL
Storage	Store antibody at -20°C for up to one year.
Note	For research use only
Isotype	IgG
Clonality	Polyclonal
MW	145 kDa
Uniprot ID	Q13972
NCBI	NP_002882.3
Expiration Date	12 months from date of receipt.



Immunohistochemical analysis of paraffin...