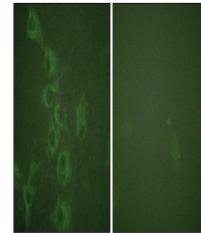


Product Datasheet

HRH1 Antibody (orb1253128)

Description	HRH1 Antibody
Species/Host	Rabbit
Reactivity	Human, Mouse
Conjugation	Unconjugated
Tested Applications	IF
Immunogen	Histamine H1 Receptor (phospho Ser398) antibody was raised against a peptide sequence around phosphorylation site of Serine 398 (S-H-S (p)-R-Q) derived from Human Histamine H1 Receptor .
Target	HRH1
Preservatives	Antibody supplied in phosphate buffered saline (without Mg ²⁺ and Ca ²⁺), pH 7.4, 150mM NaCl, 0.02% sodium azide and 50% glycerol.
Form/Appearance	Liquid
Concentration	1 mg/mL
Storage	Store antibody at -20°C for up to one year.
Note	For research use only
Isotype	IgG
Clonality	Polyclonal
MW	55 kDa
Uniprot ID	P35367
NCBI	NP_000852.1
Expiration Date	12 months from date of receipt.



Immunofluorescence staining of methanol-...