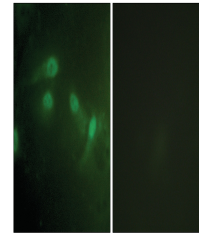


Product Datasheet

MDM2 Antibody (orb1253122)

Description	MDM2 Antibody
Species/Host	Rabbit
Reactivity	Human
Conjugation	Unconjugated
Tested Applications	IF
Immunogen	MDM2 (phospho Ser186/Ser188) antibody was raised against a peptide sequence around phosphorylation site of Ser186/Ser188 (H-K-S (p)-D-S (p)-I-S) derived from Human MDM2.
Target	MDM2
Preservatives	Antibody supplied in phosphate buffered saline (without Mg ²⁺ and Ca ²⁺), pH 7.4, 150mM NaCl, 0.02% sodium azide and 50% glycerol.
Form/Appearance	Liquid
Concentration	1 mg/mL
Storage	Store antibody at -20°C for up to one year.
Note	For research use only
Isotype	IgG
Clonality	Polyclonal
MW	55 kDa
Uniprot ID	Q00987
NCBI	NP_001138811.1
Expiration Date	12 months from date of receipt.



Immunofluorescence staining of methanol...