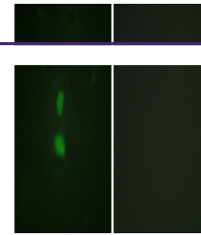

Product Datasheet

SNAI1 Antibody (orb1253115)

Description	SNAI1 Antibody
Species/Host	Rabbit
Reactivity	Human, Mouse
Conjugation	Unconjugated
Tested Applications	IF, WB
Immunogen	SNAI1 (phospho Ser246) antibody was raised against a peptide sequence around phosphorylation site of Serine 246 (T-F-S (p)-R-M) derived from Human SNAI1.
Target	SNAI1
Preservatives	Antibody supplied in phosphate buffered saline (without Mg ²⁺ and Ca ²⁺), pH 7.4, 150mM NaCl, 0.02% sodium azide and 50% glycerol.
Form/Appearance	Liquid
Concentration	1 mg/mL
Storage	Store antibody at -20°C for up to one year.
Note	For research use only
Application notes	Western Blot: 1:500~1:1000, Immunofluorescence: 1:100~1:200
Isotype	IgG
Clonality	Polyclonal
MW	29 kDa
Uniprot ID	O95863
NCBI	NP_005976.2
Dilution Range	Western Blot: 1:500~1:1000, Immunofluorescence: 1:100~1:200
Expiration Date	12 months from date of receipt.



Immunofluorescence staining of methanol...