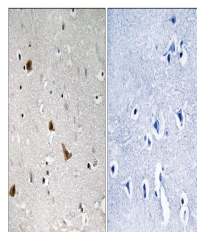


Product Datasheet

IKBKG Antibody (orb1253096)

Description	IKBKG Antibody
Species/Host	Rabbit
Reactivity	Human
Conjugation	Unconjugated
Tested Applications	IHC
Immunogen	IKK- γ (phospho Ser376) antibody was raised against a peptide sequence around phosphorylation site of Serine 376 (Y-L-S (p)-S-P) derived from Human IKK- γ .
Target	IKBKG
Preservatives	Antibody supplied in phosphate buffered saline (without Mg ²⁺ and Ca ²⁺), pH 7.4, 150mM NaCl, 0.02% sodium azide and 50% glycerol.
Form/Appearance	Liquid
Concentration	1 mg/mL
Storage	Store antibody at -20°C for up to one year.
Note	For research use only
Isotype	IgG
Clonality	Polyclonal
MW	48 kDa
Uniprot ID	Q9Y6K9
NCBI	NP_001093327.1
Expiration Date	12 months from date of receipt.



Immunohistochemical analysis of paraffin...