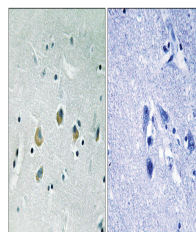


Product Datasheet

MAP3K8 Antibody (orb1253090)

Description	MAP3K8 Antibody
Species/Host	Rabbit
Reactivity	Human, Mouse, Rat
Conjugation	Unconjugated
Tested Applications	IHC
Immunogen	MAP3K8 (phospho Ser400) antibody was raised against a peptide sequence around phosphorylation site of Serine 400 (C-Q-S (p)-L-D) derived from HumanMAP3K8.
Target	MAP3K8
Preservatives	Antibody supplied in phosphate buffered saline (without Mg ²⁺ and Ca ²⁺), pH 7.4, 150mM NaCl, 0.02% sodium azide and 50% glycerol.
Form/Appearance	Liquid
Concentration	1 mg/mL
Storage	Store antibody at -20°C for up to one year.
Note	For research use only
Isotype	IgG
Clonality	Polyclonal
MW	52 kDa
Uniprot ID	P41279
NCBI	NP_001231063.1
Expiration Date	12 months from date of receipt.



Immunohistochemical analysis of paraffin...