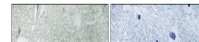

Product Datasheet

MAP2K3 Antibody (orb1253088)

Description

MAP2K3 Antibody


Species/Host

Rabbit

Reactivity

Human, Mouse, Rat

Conjugation

Unconjugated

Tested

IHC, WB

Applications

Immunohistochemical analysis of paraffin...

Immunogen

MAP2K3 (phospho Thr222) antibody was raised against a peptide sequence around phosphorylation site of threonine 222 (A-K-T (p)-M-D) derived from Human MAP2K3 .

Target

MAP2K3

Preservatives

 Antibody supplied in phosphate buffered saline (without Mg²⁺ and Ca²⁺), pH 7.4, 150mM NaCl, 0.02% sodium azide and 50% glycerol.

Form/Appearance

Liquid

Concentration

1 mg/mL

Storage

Store antibody at -20°C for up to one year.

Note

For research use only

Application notes

 Western Blot: 1:500~1:1000,
Immunohistochemistry: 1:50~1:100

Isotype

IgG

Clonality

Polyclonal

MW

39 kDa

Uniprot ID
[P46734](#)
NCBI
[NP_659731.1](#)
Dilution Range

 Western Blot: 1:500~1:1000,
Immunohistochemistry: 1:50~1:100

Expiration Date

12 months from date of receipt.