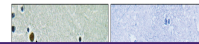


## Product Datasheet

### MAP2K7 Antibody (orb1253087)

**Description**

MAP2K7 Antibody


**Species/Host**

Rabbit

**Reactivity**

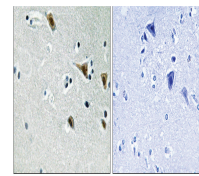
Human, Mouse, Rat

**Conjugation**

Unconjugated

**Tested Applications**

IHC, WB



Immunohistochemical analysis of paraffin...

**Immunogen**

MAP2K7 (phospho Ser271) antibody was raised against a peptide sequence around phosphorylation site of Serine271 (V-D-S (p)-K-A) derived from Human MAP2K7.

**Target**

MAP2K7

**Preservatives**

 Antibody supplied in phosphate buffered saline (without Mg<sup>2+</sup> and Ca<sup>2+</sup>), pH 7.4, 150mM NaCl, 0.02% sodium azide and 50% glycerol.

**Form/Appearance**

Liquid

**Concentration**

1 mg/mL

**Storage**

Store antibody at -20°C for up to one year.

**Note**

For research use only

**Application notes**

 Western Blot: 1:500~1:1000,  
Immunohistochemistry: 1:50~1:100

**Isotype**

IgG

**Clonality**

Polyclonal

**MW**

60 kDa

**Uniprot ID**
[O14733](#)
**NCBI**
[NP\\_660186.1](#)
**Dilution Range**

 Western Blot: 1:500~1:1000,  
Immunohistochemistry: 1:50~1:100

**Expiration Date**

12 months from date of receipt.