

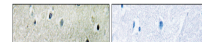
---

## Product Datasheet

### FRS2 Antibody (orb1253062)

**Description**

FRS2 Antibody


**Species/Host**

Rabbit

**Reactivity**

Human, Mouse

**Conjugation**

Unconjugated

**Tested**

IHC, WB

**Applications**

Immunohistochemical analysis of paraffin...

**Immunogen**

FRS2 (phospho Tyr436) antibody was raised against a peptide sequence around phosphorylation site of tyrosine 436 (L-N-Y (p)-I-Q) derived from Human FRS2

**Target**

FRS2

**Preservatives**

 Antibody supplied in phosphate buffered saline (without Mg<sup>2+</sup> and Ca<sup>2+</sup>), pH 7.4, 150mM NaCl, 0.02% sodium azide and 50% glycerol.

**Form/Appearance**

Liquid

**Concentration**

1 mg/mL

**Storage**

Store antibody at -20°C for up to one year.

**Note**

For research use only

**Application notes**

Western Blot: 1:500~1:1000, Immunohistochemistry: 1:50~1:100

**Isotype**

IgG

**Clonality**

Polyclonal

**MW**

65 kDa

**Uniprot ID**
[Q8WU20](#)
**NCBI**
[NP\\_001036020.1](#)
**Dilution Range**

Western Blot: 1:500~1:1000, Immunohistochemistry: 1:50~1:100

**Expiration Date**

12 months from date of receipt.