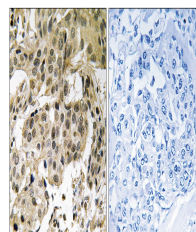


Product Datasheet

CBX5 Antibody (orb1253055)

| | |
|----------------------------|--|
| Description | CBX5 Antibody |
| Species/Host | Rabbit |
| Reactivity | Human |
| Conjugation | Unconjugated |
| Tested Applications | IHC |
| Immunogen | HP1alpha (phospho Ser92) antibody was raised against a peptide sequence around phosphorylation site of Serine 92 (R-S-S (p)-N-F) derived from Human HP1alpha . |
| Target | CBX5 |
| Preservatives | Antibody supplied in phosphate buffered saline (without Mg ²⁺ and Ca ²⁺), pH 7.4, 150mM NaCl, 0.02% sodium azide and 50% glycerol. |
| Form/Appearance | Liquid |
| Concentration | 1 mg/mL |
| Storage | Store antibody at -20°C for up to one year. |
| Note | For research use only |
| Isotype | IgG |
| Clonality | Polyclonal |
| MW | 22 kDa |
| Uniprot ID | P45973 |
| NCBI | NP_001120793.1 |
| Expiration Date | 12 months from date of receipt. |



Immunohistochemical analysis of paraffin...