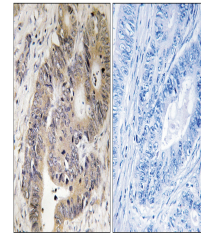


Product Datasheet

CAD Antibody (orb1253043)

Description	CAD Antibody
Species/Host	Rabbit
Reactivity	Human, Mouse
Conjugation	Unconjugated
Tested Applications	IHC
Immunogen	CAD (phospho Thr456) antibody was raised against a peptide sequence around phosphorylation site of threonine 456 (P-I-T (p)-P-H) derived from Human CAD.
Target	CAD
Preservatives	Antibody supplied in phosphate buffered saline (without Mg ²⁺ and Ca ²⁺), pH 7.4, 150mM NaCl, 0.02% sodium azide and 50% glycerol.
Form/Appearance	Liquid
Concentration	1 mg/mL
Storage	Store antibody at -20°C for up to one year.
Note	For research use only
Isotype	IgG
Clonality	Polyclonal
MW	242 kDa
Uniprot ID	P27708
NCBI	NP_004332.2
Expiration Date	12 months from date of receipt.



Immunohistochemical analysis of paraffin...