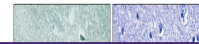

Product Datasheet

DPYSL2 Antibody (orb1253037)

Description

DPYSL2 Antibody


Species/Host

Rabbit

Reactivity

Human, Mouse, Rat

Conjugation

Unconjugated

Tested

IHC, WB

Applications

Immunohistochemical analysis of paraffin...

Immunogen

CRMP-2 (phospho Thr509) antibody was raised against a peptide sequence around phosphorylation site of threonine 509 (S-V-T (p)-P-K) derived from Human CRMP-2.

Target

DPYSL2

Preservatives

 Antibody supplied in phosphate buffered saline (without Mg²⁺ and Ca²⁺), pH 7.4, 150mM NaCl, 0.02% sodium azide and 50% glycerol.

Form/Appearance

Liquid

Concentration

1 mg/mL

Storage

Store antibody at -20°C for up to one year.

Note

For research use only

Application notes

Western Blot: 1:500~1:1000, Immunohistochemistry: 1:50~1:100

Isotype

IgG

Clonality

Polyclonal

MW

50 kDa

Uniprot ID
[Q16555](#)
NCBI
[NP_001377.1](#)
Dilution Range

Western Blot: 1:500~1:1000, Immunohistochemistry: 1:50~1:100

Expiration Date

12 months from date of receipt.