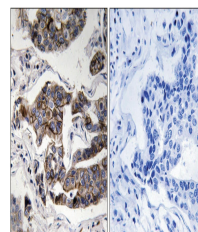


## Product Datasheet

### CCDC88A Antibody (orb1253028)

<b>Description</b>	CCDC88A Antibody
<b>Species/Host</b>	Rabbit
<b>Reactivity</b>	Human, Mouse
<b>Conjugation</b>	Unconjugated
<b>Tested Applications</b>	IHC
<b>Immunogen</b>	Girdin (phospho Ser1417) antibody was raised against a peptide sequence around phosphorylation site of Serine 417 (L-E-M (p)-A-Q) derived from Human Girdin .
<b>Target</b>	CCDC88A
<b>Preservatives</b>	Antibody supplied in phosphate buffered saline (without Mg <sup>2+</sup> and Ca <sup>2+</sup> ), pH 7.4, 150mM NaCl, 0.02% sodium azide and 50% glycerol.
<b>Form/Appearance</b>	Liquid
<b>Concentration</b>	1 mg/mL
<b>Storage</b>	Store antibody at -20°C for up to one year.
<b>Note</b>	For research use only
<b>Isotype</b>	IgG
<b>Clonality</b>	Polyclonal
<b>MW</b>	216 kDa
<b>Uniprot ID</b>	<a href="#">Q3V6T2</a>
<b>NCBI</b>	<a href="#">NP_060554.3</a>
<b>Expiration Date</b>	12 months from date of receipt.



Immunohistochemical analysis of paraffin...