

## Product Datasheet

### MAPKAPK2 Antibody (orb1253027)

**Description**

MAPKAPK2 Antibody

**Species/Host**

Rabbit

**Reactivity**

Human, Mouse, Rat

**Conjugation**

Unconjugated

**Tested**

IHC, WB

**Applications**
**Immunogen**

MAPKAPK2 (phospho Ser272) antibody was raised against a peptide sequence around phosphorylation site of Serine 272 (A-I-S (p)-P-G) derived from Human MAPKAPK2.

**Target**

MAPKAPK2

**Preservatives**

Antibody supplied in phosphate buffered saline (without Mg<sup>2+</sup> and Ca<sup>2+</sup>), pH 7.4, 150mM NaCl, 0.02% sodium azide and 50% glycerol.

**Form/Appearance**

Liquid

**Concentration**

1 mg/mL

**Storage**

Store antibody at -20°C for up to one year.

**Note**

For research use only

**Application notes**

Western Blot: 1:500~1:1000,  
Immunohistochemistry: 1:50~1:100

**Isotype**

IgG

**Clonality**

Polyclonal

**MW**

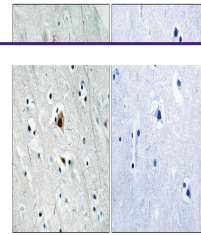
45 kDa

**Uniprot ID**
[P49137](#)
**NCBI**
[NP\\_116584.2](#)
**Dilution Range**

Western Blot: 1:500~1:1000,  
Immunohistochemistry: 1:50~1:100

**Expiration Date**

12 months from date of receipt.



Immunohistochemical analysis of paraffin...