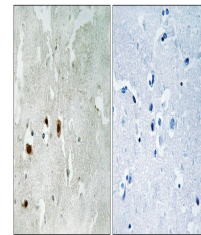


Product Datasheet

KAT5 Antibody (orb1253018)

Description	KAT5 Antibody
Species/Host	Rabbit
Reactivity	Human, Mouse, Rat
Conjugation	Unconjugated
Tested Applications	IHC
Immunogen	Tip60 (phospho Ser90) antibody was raised against a peptide sequence around phosphorylation site of Serine 90 (P-G-S (p)-P-E) derived from Human Tip60.
Target	KAT5
Preservatives	Antibody supplied in phosphate buffered saline (without Mg ²⁺ and Ca ²⁺), pH 7.4, 150mM NaCl, 0.02% sodium azide and 50% glycerol.
Form/Appearance	Liquid
Concentration	1 mg/mL
Storage	Store antibody at -20°C for up to one year.
Note	For research use only
Isotype	IgG
Clonality	Polyclonal
MW	58 kDa
Uniprot ID	Q92993
NCBI	NP_006379.2
Expiration Date	12 months from date of receipt.



Immunohistochemical analysis of paraffin...