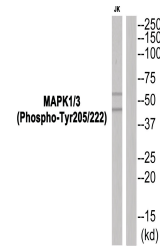


Product Datasheet

MAPK1, MAPK3 Antibody (orb1253008)

Description	MAPK1, MAPK3 Antibody
Species/Host	Rabbit
Reactivity	Human, Mouse, Rat
Conjugation	Unconjugated
Tested Applications	WB
Immunogen	MAPK1/3 (phospho Tyr205/222) antibody was raised against a peptide sequence around phosphorylation site of tyrosine 205/222 (K-G-Y (p)-T-K) derived from Human MAPK1/3 .
Target	MAPK1, MAPK3
Preservatives	Antibody supplied in phosphate buffered saline (without Mg ²⁺ and Ca ²⁺), pH 7.4, 150mM NaCl, 0.02% sodium azide and 50% glycerol.
Form/Appearance	Liquid
Concentration	1 mg/mL
Storage	Store antibody at -20°C for up to one year.
Note	For research use only
Application notes	Western Blot: 1:500~1:1000
Isotype	IgG
Clonality	Polyclonal
MW	44 kDa
Uniprot ID	P27361 , P28482
NCBI	NP_002736.3
Dilution Range	Western Blot: 1:500~1:1000
Expiration Date	12 months from date of receipt.



Western blot analysis of extracts from J...