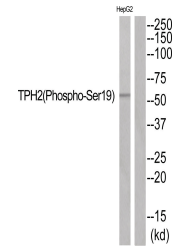


Product Datasheet

TPH2 Antibody (orb1253005)

Description	TPH2 Antibody
Species/Host	Rabbit
Reactivity	Human, Mouse, Rat
Conjugation	Unconjugated
Tested Applications	WB
Immunogen	TPH2 (phospho Ser19) antibody was raised against a peptide sequence around phosphorylation site of Serine 19 (G-F-S (p)-L-D) derived from Human TPH2.
Target	TPH2
Preservatives	Antibody supplied in phosphate buffered saline (without Mg ²⁺ and Ca ²⁺), pH 7.4, 150mM NaCl, 0.02% sodium azide and 50% glycerol.
Form/Appearance	Liquid
Concentration	1 mg/mL
Storage	Store antibody at -20°C for up to one year.
Note	For research use only
Application notes	Western Blot: 1:500~1:1000
Isotype	IgG
Clonality	Polyclonal
MW	56 kDa
Uniprot ID	Q81WU9
NCBI	NP_775489.2
Dilution Range	Western Blot: 1:500~1:1000
Expiration Date	12 months from date of receipt.



Western blot analysis of extracts from H...