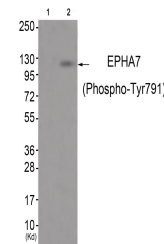


Product Datasheet

EPHA7 Antibody (orb1252998)

Description	EPHA7 Antibody
Species/Host	Rabbit
Reactivity	Human, Mouse, Rat
Conjugation	Unconjugated
Tested Applications	WB
Immunogen	EPHA7 (phospho Tyr791) antibody was raised against a peptide sequence around phosphorylation site of tyrosine 791 (A-V-Y (p)-T-T) derived from Human EPHA7 .
Target	EPHA7
Preservatives	Antibody supplied in phosphate buffered saline (without Mg ²⁺ and Ca ²⁺), pH 7.4, 150mM NaCl, 0.02% sodium azide and 50% glycerol.
Form/Appearance	Liquid
Concentration	1 mg/mL
Storage	Store antibody at -20°C for up to one year.
Note	For research use only
Application notes	Western Blot: 1:500~1:1000
Isotype	IgG
Clonality	Polyclonal
MW	112 kDa
Uniprot ID	Q15375
NCBI	NP_004431.1
Dilution Range	Western Blot: 1:500~1:1000
Expiration Date	12 months from date of receipt.



Western blot analysis of extracts from J...