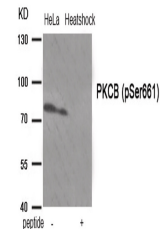


Product Datasheet

PRKCB Antibody (orb1252985)

Description	PRKCB Antibody
Species/Host	Rabbit
Reactivity	Human, Mouse, Rat
Conjugation	Unconjugated
Tested Applications	WB
Immunogen	PKCB (phospho Ser661) antibody was raised against a peptide sequence around phosphorylation site of serine 661 (G-F-S (p)-Y-T) derived from Human PKCB.
Target	PRKCB
Preservatives	Antibody supplied in phosphate buffered saline (without Mg ²⁺ and Ca ²⁺), pH 7.4, 150mM NaCl, 0.02% sodium azide and 50% glycerol.
Form/Appearance	Liquid
Concentration	1 mg/mL
Storage	Store antibody at -20°C for up to one year.
Note	For research use only
Application notes	Western Blot: 1:500~1:1000
Isotype	IgG
Clonality	Polyclonal
MW	77 kDa
Uniprot ID	P05771
NCBI	NP_002729.2
Dilution Range	Western Blot: 1:500~1:1000
Expiration Date	12 months from date of receipt.



Western blot analysis of extracts from H...