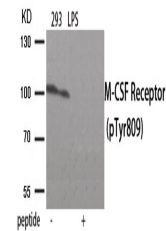


Product Datasheet

CSF1R Antibody (orb1252984)

Description	CSF1R Antibody
Species/Host	Rabbit
Reactivity	Human, Mouse, Rat
Conjugation	Unconjugated
Tested Applications	WB
Immunogen	M-CSF Receptor (phospho Tyr809) antibody was raised against a peptide sequence around phosphorylation site of tyrosine 809 (S-N-Y (p)-I-V) derived from Human M-CSF Receptor.
Target	CSF1R
Preservatives	Antibody supplied in phosphate buffered saline (without Mg ²⁺ and Ca ²⁺), pH 7.4, 150mM NaCl, 0.02% sodium azide and 50% glycerol.
Form/Appearance	Liquid
Concentration	1 mg/mL
Storage	Store antibody at -20°C for up to one year.
Note	For research use only
Application notes	Western Blot: 1:500~1:1000
Isotype	IgG
Clonality	Polyclonal
MW	108 kDa
Uniprot ID	P07333
NCBI	NP_001275634.1
Dilution Range	Western Blot: 1:500~1:1000
Expiration Date	12 months from date of receipt.



Western blot analysis of extracts from 2...