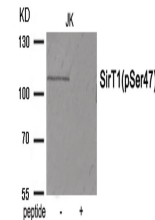


Product Datasheet

SIRT1 Antibody (orb1252964)

Description	SIRT1 Antibody
Species/Host	Rabbit
Reactivity	Human, Mouse
Conjugation	Unconjugated
Tested Applications	WB
Immunogen	SirT1 (phospho Ser47) antibody was raised against a peptide sequence around phosphorylation site of serine 47 (E-R-S (p)-P-G) derived from Human SirT1.
Target	SIRT1
Preservatives	Antibody supplied in phosphate buffered saline (without Mg ²⁺ and Ca ²⁺), pH 7.4, 150mM NaCl, 0.02% sodium azide and 50% glycerol.
Form/Appearance	Liquid
Concentration	1 mg/mL
Storage	Store antibody at -20°C for up to one year.
Note	For research use only
Application notes	Western Blot: 1:500~1:1000
Isotype	IgG
Clonality	Polyclonal
MW	110 kDa
Uniprot ID	Q96EB6
NCBI	NP_001135970.1
Dilution Range	Western Blot: 1:500~1:1000
Expiration Date	12 months from date of receipt.



Western blot analysis of extracts from J...