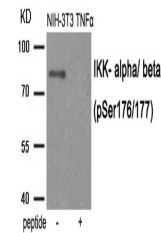


Product Datasheet

CHUK Antibody (orb1252960)

Description	CHUK Antibody
Species/Host	Rabbit
Reactivity	Human, Mouse, Rat
Conjugation	Unconjugated
Tested Applications	WB
Immunogen	IKK- alpha/ beta (phospho Ser176/177) antibody was raised against a peptide sequence around phosphorylation site of serine 176/177 (Q-G-S (p)-L-C) derived from Human IKK-alpha/beta.
Target	CHUK
Preservatives	Antibody supplied in phosphate buffered saline (without Mg ²⁺ and Ca ²⁺), pH 7.4, 150mM NaCl, 0.02% sodium azide and 50% glycerol.
Form/Appearance	Liquid
Concentration	1 mg/mL
Storage	Store antibody at -20°C for up to one year.
Note	For research use only
Application notes	Western Blot: 1:500~1:1000
Isotype	IgG
Clonality	Polyclonal
MW	85 kDa
Uniprot ID	O15111 , O14920
NCBI	NP_001269.3
Dilution Range	Western Blot: 1:500~1:1000
Expiration Date	12 months from date of receipt.



Western blot analysis of extracts from N...