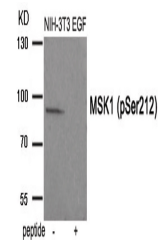


Product Datasheet

RPS6KA5 Antibody (orb1252958)

Description	RPS6KA5 Antibody
Species/Host	Rabbit
Reactivity	Human, Mouse
Conjugation	Unconjugated
Tested Applications	WB
Immunogen	MSK1 (phospho Ser212) antibody was raised against a peptide sequence around phosphorylation site of serine 212 (A-Y-S (p)-F-C) derived from Human MSK1.
Target	RPS6KA5
Preservatives	Antibody supplied in phosphate buffered saline (without Mg ²⁺ and Ca ²⁺), pH 7.4, 150mM NaCl, 0.02% sodium azide and 50% glycerol.
Form/Appearance	Liquid
Concentration	1 mg/mL
Storage	Store antibody at -20°C for up to one year.
Note	For research use only
Application notes	Western Blot: 1:500~1:1000
Isotype	IgG
Clonality	Polyclonal
MW	90 kDa
Uniprot ID	O75582
NCBI	NP_004746.2
Dilution Range	Western Blot: 1:500~1:1000
Expiration Date	12 months from date of receipt.



Western blot analysis of extracts from N...