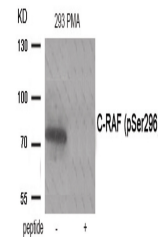


Product Datasheet

RAF1 Antibody (orb1252956)

| | |
|----------------------------|---|
| Description | RAF1 Antibody |
| Species/Host | Rabbit |
| Reactivity | Human, Mouse, Rat |
| Conjugation | Unconjugated |
| Tested Applications | WB |
| Immunogen | C-RAF (phospho Ser296) antibody was raised against a peptide sequence around phosphorylation site of serine 296 (S-S-S (p)-P-N) derived from Human C-RAF. |
| Target | RAF1 |
| Preservatives | Antibody supplied in phosphate buffered saline (without Mg ²⁺ and Ca ²⁺), pH 7.4, 150mM NaCl, 0.02% sodium azide and 50% glycerol. |
| Form/Appearance | Liquid |
| Concentration | 1 mg/mL |
| Storage | Store antibody at -20°C for up to one year. |
| Note | For research use only |
| Application notes | Western Blot: 1:500~1:1000 |
| Isotype | IgG |
| Clonality | Polyclonal |
| MW | 74 kDa |
| Uniprot ID | P04049 |
| NCBI | NP_002871.1 |
| Dilution Range | Western Blot: 1:500~1:1000 |
| Expiration Date | 12 months from date of receipt. |



Western blot analysis of extracts from 2...