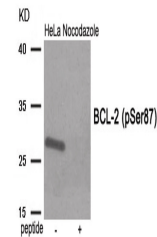


Product Datasheet

BCL2 Antibody (orb1252950)

Description	BCL2 Antibody
Species/Host	Rabbit
Reactivity	Human, Mouse, Rat
Conjugation	Unconjugated
Tested Applications	WB
Immunogen	BCL-2 (phospho Ser87) antibody was raised against a peptide sequence around phosphorylation site of serine 87 (A-L-S (p)-P-V) derived from Human BCL-2.
Target	BCL2
Preservatives	Antibody supplied in phosphate buffered saline (without Mg ²⁺ and Ca ²⁺), pH 7.4, 150mM NaCl, 0.02% sodium azide and 50% glycerol.
Form/Appearance	Liquid
Concentration	1 mg/mL
Storage	Store antibody at -20°C for up to one year.
Note	For research use only
Application notes	Western Blot: 1:500~1:1000
Isotype	IgG
Clonality	Polyclonal
MW	28 kDa
Uniprot ID	P10415
NCBI	NP_000624.2
Dilution Range	Western Blot: 1:500~1:1000
Expiration Date	12 months from date of receipt.



Western blot analysis of extracts from H...